

VDRG® PEDV Ag Rapid kit

CAT. NO. PS-PED-11



PRINCIPLES

VDRG® PEDV Ag Rapid kit is a chromatographic immunoassay for the detection of Porcine Epidemic Diarrhea Virus (PEDV) in porcine feces.

This is a diagnostic kit to detect PEDV antigen by mixing porcine feces with dilution buffer followed by putting them into the specimen hole. If there are PEDV antigens in the porcine feces, these antigens bind to PEDV specific antibody-gold particle conjugates and move on the membrane by capillary forces, and then shows a red line on the test line due to the binding with PEDV specific antibodies which are already applied on the membrane. This test kit, the diagnostic reagent can detect PEDV antigens quickly and simply at 10 minutes after injection of specimens.

KIT COMPONENTS

Components	10 Tests/kit
① PEDV Ag Rapid device	10 tests
② Sample dilution buffer (1ml)	10 vials
③ Swabs	10 ea
④ Dropper	10 ea
⑤ Instruction Manual	1 copy

APPEARANCE

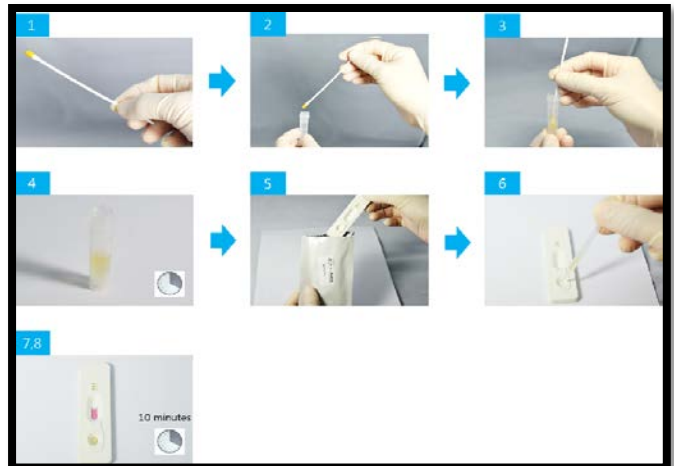
- In a test device : There is the sample drip part on the lower plastic cassette for sample dropping. The location of the test (T) and control (C) lines are marked on the rectangle display. The sample pad, feces separation pad, conjugate pad, nitrocellulose membrane, and absorption pad are attached to the test strip with them overlapped one after another.
- Sample dilution container : There is a transparent and colorless liquid buffer in the plastic container for dilution of a sample.

ACQUIREMENT OF SAMPLE

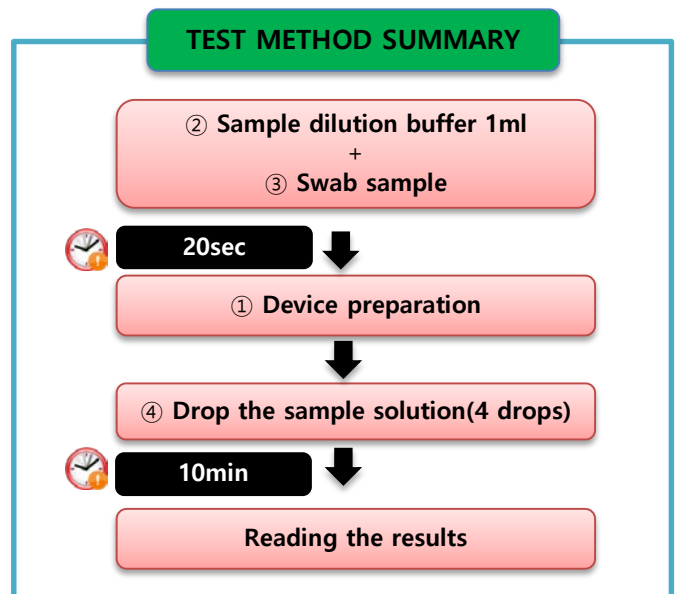
- Use porcine feces as specimens.
- Take the specimen by pricking inside of feces deeply or pulling out directly through pig's anus.
- Then mix together the sample and dilution solution.

TEST PROCEDURE

- Collect a diarrhea specimen from diarrhea feces or those in the anus using ③ swabs for fecal specimen collection.
- Put the specimen into the container that contains ② sample dilution buffer.
- Stir well the solution with a swab in order to extract the virus from the fecal specimen thoroughly.
- Place the tube upright until the large particles go down. (20 sec.)
- Place the ① VDRG® PEDV Ag Rapid Test Device on a flat surface.
- Take the supernatant of specimen solution using ④ dropper, and then instill 4 drops into the test device.
- Verify the result at 10 minutes.



TEST METHOD SUMMARY



VDRG® PEDV Ag Rapid kit

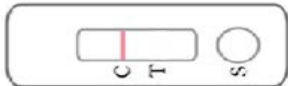
CAT. NO. PS-PED-11

RESULT INTERPRETATION

1. Positive : When there are both control line and test line.



2. Negative : When there is a control line but no test line.



3. Re-test : When there is a test line but no control line, or there are no control line and test line.



* Regardless of PEDV presence, a control line should always appear. The control line is needed to check whether abnormal reaction occurs or not, so if there is no control line, re-test should be performed.

PRECAUTIONS

1. For animals in vitro diagnostic use only.
2. This Rapid Test Device is sensitive to moisture, so it is recommended to open just before you use it and use within 10 minutes after opening.
3. Be sure to use a separate dilution container, disposable dropper, and cotton swab for each sample.
4. Direct contact such as touching to the membrane in the result display of the device can affect results.
5. Do not use the expired reagent.
6. sample runs a risk of having unknown viruses or bacteria pathogens, so it should be handled with cares. When handling the infected materials, wear the disposable gloves and wash your hands thoroughly after work.
7. After use, all wastes should be discarded after sterilization with high-pressure steam at 121 degrees Celsius at least for 15 minutes.
8. This Rapid Kit is made for primary screening. The sample which has been determined as positive should be re-tested by more precise, sophisticated methods to get the comprehensive final diagnosis from professional veterinarians.

STORAGE AND STABILITY

Store all reagents at 2~30°C. Do not freeze. Reagents remain stable until the expiration date when stored as instructed. **!**

MEDIAN Diagnostics Inc.

878, Sunhwan-daero, Dongnae-myeon, Chuncheon-si,
Gangwon-do, 24399, Republic of Korea

Tel: +82 (0)33 244 0100

Fax: +82 (0)33 244 4634

E-mail: median@mediandx.com